



battery roll pusher

MRE 100 L | MRE 100 LP | MRE 100 LPT
MRE 200 L | MRE 200 LP | MRE 200 LPT
MRE 300 L | MRE 300 LP | MRE 300 LPT
MRE 500 L |



operating instructions



This product complies with the Directive 2006/42/CE

© Copyright Renova Srl, 2013. All rights reserved.

MANMRELENA4V0421

index

introduction	page 4
warning	page 4
general warnings	page 4
assistance	page 5
general instructions	page 5
initial content of the box.....	page 5
content description	page 5
packaging	page 6
serial number	page 6
instructions for use	page 6
tilting handle	page 6
battery status	page 7
battery recharge	page 7
battery handling precautions	page 7
battery storage and disposal	page 8
malfunctions diagnosis	page 8
components descriptions and codes	page 9
instructions for a proper use	page 17
conformity statement	page 18

introduction

Dear customer,

Thank you for purchasing Renova's **MRE L / MRE LP / MRE LPT moviroll – battery roll pusher**.

We also thank you for the preference you have reserved for this innovative product. We are certain it will satisfy you with its technologically advanced solutions, its in-line and elegant design and its professional quality.

In this manual you will find our instructions for a proper use of this product and the necessary technical information, as well as our advices, to ensure excellent performance over time.

All information contained in this manual have been collected respecting the rules in force, the current state of knowledge of design and construction, our knowledge and our many years of experience.

The instruction manual was translated with all due care and attention. However, we do not accept liability for any translation errors. The Italian version of this instruction manual is definitive.

The warranty does not apply in cases which occur as a result of the Customer's violation of advice concerning operation, incorrect use, improper application, negligence (including but not limited to improper maintenance and storage), accidents, improper installation, modifications (included but not limited to the use of non-original parts or accessories not authorized by Renova), improper adjustment or repair. All parts subject to normal wear are excluded from the guarantee.

warning

CAREFULLY READ THE INSTRUCTIONS AND WARNINGS IN THIS MANUAL AND KEEP THEM FOR FURTHER REFERENCE FOR ENTIRE PRODUCT LIFE. THEY SUPPLY IMPORTANT INSTRUCTIONS REGARDING OPERATIONS AND SAFETY FOR INSTALLING, USING AND MAINTAINING THE PRODUCT.

PLEASE TAKE THE TIME TO READ AND UNDERSTAND THE INSTRUCTIONS COMPLETELY BEFORE THE INSTALLATION AND USE OF THIS PRODUCT.

IN THE EVENT OF A POSSIBLE BREAKDOWN OF THE PRODUCT, THE OPERATOR SHOULD UNDERSTAND THE MANUFACTURER'S INSTRUCTIONS AND BE AWARE OF THE DANGERS, BEFORE ANY CHECK INTERVENTION OR RECOURSE OF RENOVA'S TECHNICAL ASSISTANCE.

general warnings

- **MRE L / MRE LP / MRE LPT moviroll** is exclusively designed to move cylindrical loads as paper and corrugated rolls, wood and steel rolls, and vehicles.
- **MRE L / MRE LP / MRE LPT moviroll** must not be used to brake heavy loads which run toward the appliance.
- The work place must be kept proper of whatever object should be between the machine and the object to move. Any object in between that could create a somersault, a sliding or a fall must be kept away.
- The operator must always be aware that nothing or no one is in the way of the object to be displaced and that no one could be endangered by the moving object.
- Certain fundamental rules must be respected when using any kind of electrical appliance. More specifically:
 - do not leave the appliance exposed to the weather (rain, sun, etc.)
 - do not use the appliance next to flammable material
 - do not let children or incapable persons use the appliance without supervision
- A hearing protection must always be used.

assistance

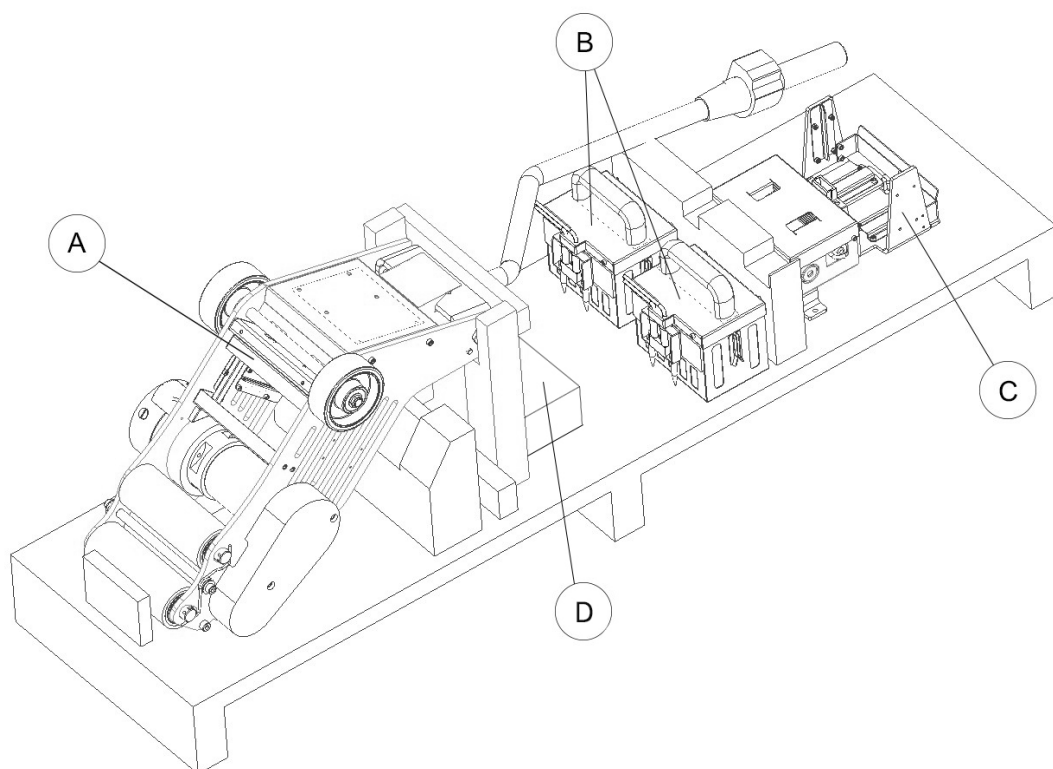
Renova is worldwide present with Agents and Distributors.

Contact Renova support

support@renova-srl.com

general instructions

INITIAL CONTENT OF THE BOX



A	MRE L / MRE LP / MRE LPT moviroll	x1
B	batteries	x2 (optional)
C	battery charger	x1
D	shipment kit	x1

CONTENT DESCRIPTION

MOVIROLL - In the box you can find the **moviroll** model as previously ordered: MRE L / MRE LP / MRE LPT

BATTERIES - MRE L / MRE LP / MRE LPT **moviroll** (all models) is provided with a second battery (optional). The two Plug&Play batteries are housed in the box near the **moviroll** system. They are supplied with a state of charge at 30% or less; therefore, they require a full charging cycle before the use.

BATTERY CHARGER - **moviroll** is provided with the original battery charger.

SHIPMENT KIT - with spare throttle, plug battery and fuse for the electronic board.

PACKAGING

Please do not throw away the wood packaging of your **moviroll** as it might be useful for storage purposes, when moving or, in case of damages, when the device must be sent back to Renova srl.

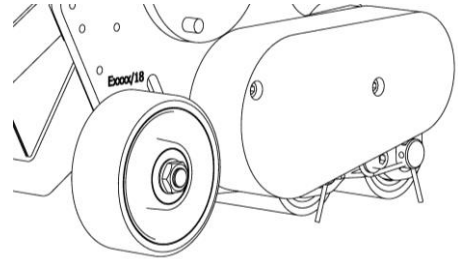
SERIAL NUMBER

Each **moviroll** is provided with its serial number.

Please find the serial number of your **moviroll** stamped on the **moviroll** frame, above the rear wheel.

Example in the picture on the right.



Please find the serial number also on the warranty sheet provided with the **moviroll**.



IMPORTANT:

Always communicate the serial number when requiring assistance or spare parts for your **moviroll**.

instructions for use

- Unpack the appliance and store the packaging material
- After unpacking, make sure that the appliance is intact with no visible signs of damage caused by transport. If in doubt, do not use the appliance and contact Renova srl
- Place the **moviroll** on a safe and flat surface that can support its weight
- Insert one battery into the special chassis. After three months of non-use, the battery needs a full discharge and charge cycle
- A permanently lit red LED indicates that the appliance is ready to be used
- Now select the forward gear -  - or the backward gear -  (emergency)
- After approximately 30 seconds of inactivity, MRE switches to Standby mode. To resume operation, you need to press the forward or reverse button and then rotate the accelerator knob. MRE will start moving in the previously selected direction. (*Note: This function is available in the newer versions. For further assistance, please contact Renova srl.)
- To start using the **MRE L / MRE LP / MRE LPT moviroll** to handle rolls just spin the accelerator handle.
- Push the switch into OFF position when the **moviroll** is not running in order to preserve the battery charge

PLEASE NOTE:

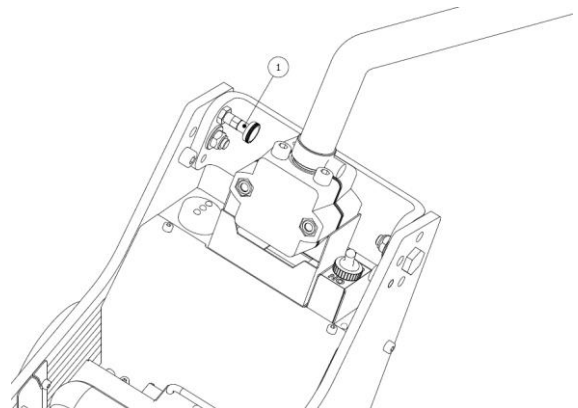
The **moviroll** battery roll pusher is equipped with reverse gear. Please use the reverse gear to release the **moviroll** from the roll, when the **moviroll** remains locked beneath the roll weight because of an obstacle or a wrong maneuver.

TILTING HANDLE

moviroll models are also equipped with tilting handle.

When the working space is small, the operator can work alongside the load only turning the handle and 'pull' the load instead of thrusting it.

- Pull outward the spring stopper (position 1 in the picture) to overturn the handle



- Overturn the handle until the handle locks
- Pull outward the spring stopper and push back the handle to unlock the handle and to bring it to its original position

BATTERY STATUS

The battery status LEDs (see the picture at page 10):

GREEN LED	charged battery
YELLOW LED	50% battery charge (when active)
RED LED	discharged battery

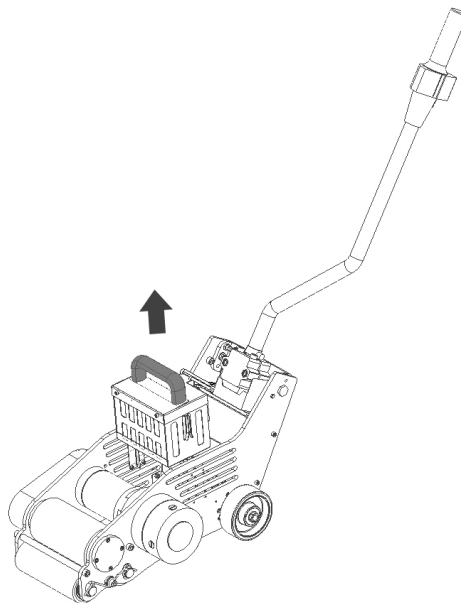


ATTENTION!

Use the **moviroll** only when GREEN and YELLOW LEDs. Do not use the **moviroll** with RED battery status LED to avoid any irreparable damage to the electronic unit and the battery. With RED LED recharging the battery is mandatory before using the **moviroll** again.

BATTERY RECHARGE

- Push the switch into the OFF position
- **Remove the battery from the chassis (as in the picture) and place it in a suitable area before charging it**
- Connect the battery to the battery charger through the connector
- Connect the battery charger to the mains supply.
Two red LEDs on the battery charger now turn on; one LED indicates that the battery charger is under tension, the other LED indicates that the battery is charging.
- The estimated time of charging is about 4 hours (maximum time needed for a full recharge of the battery). The battery is full recharged when one of the two LEDs will turn green.
- Please leave the battery under charge for about 30 minutes to stabilize the tension of the cells.
- After recharging the battery disconnect the battery from the charger, then the charger from the mains supply. The red LED of the charger will remain lit for a bit of time even if cable unplugged.



PLEASE NOTE:

In the case of battery charger equipped with a single LED, this will be lit red and turn green at completed recharge.



ATTENTION!

For the full recharge of the battery, please use the battery charger supplied with the **moviroll** battery roll pusher. To not damage the battery please do not use different battery chargers.

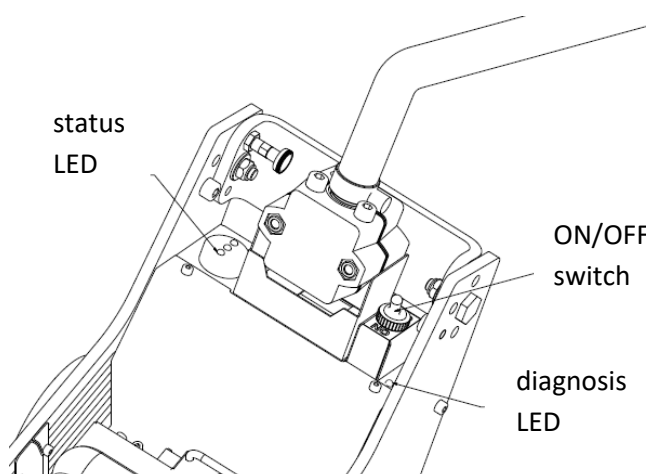
BATTERY HANDLING PRECAUTIONS

- Do not disassemble, crush or puncture a battery
- Do not dispose of a battery in fire
- Do not immerse the unit in any liquid
- Do not expose a battery to temperatures above 40°C (104°F) and below 5°C (41°F)
- Do not use a damaged battery
- Do not leave batteries unused for extended periods of time, either in the product or in storage
- **BATTERY STORAGE AND DISPOSAL**

- Store the batteries separately from the product
- Store the batteries at temperatures between 15°C and 20°C (59°F and 68°F)
- Always check and follow your applicable regulations before disposing of a battery

malfunctions diagnosis

In case of anomaly or not functioning of the **moviroll** system, please count the number of flashes of the diagnosis LED to identify the problem and solve it using the schedule below:



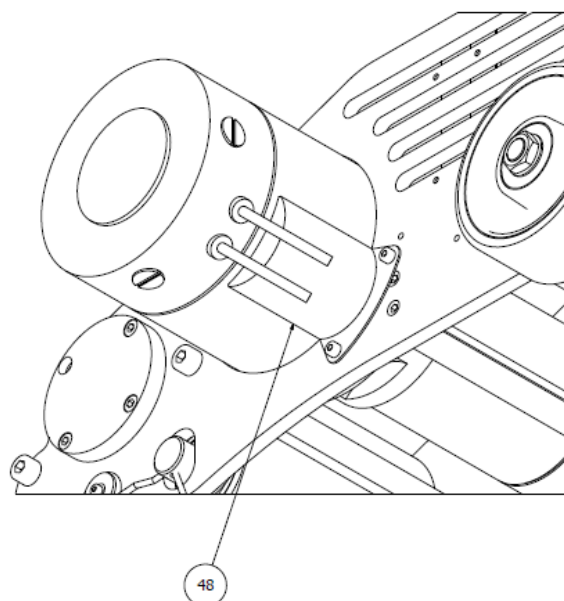
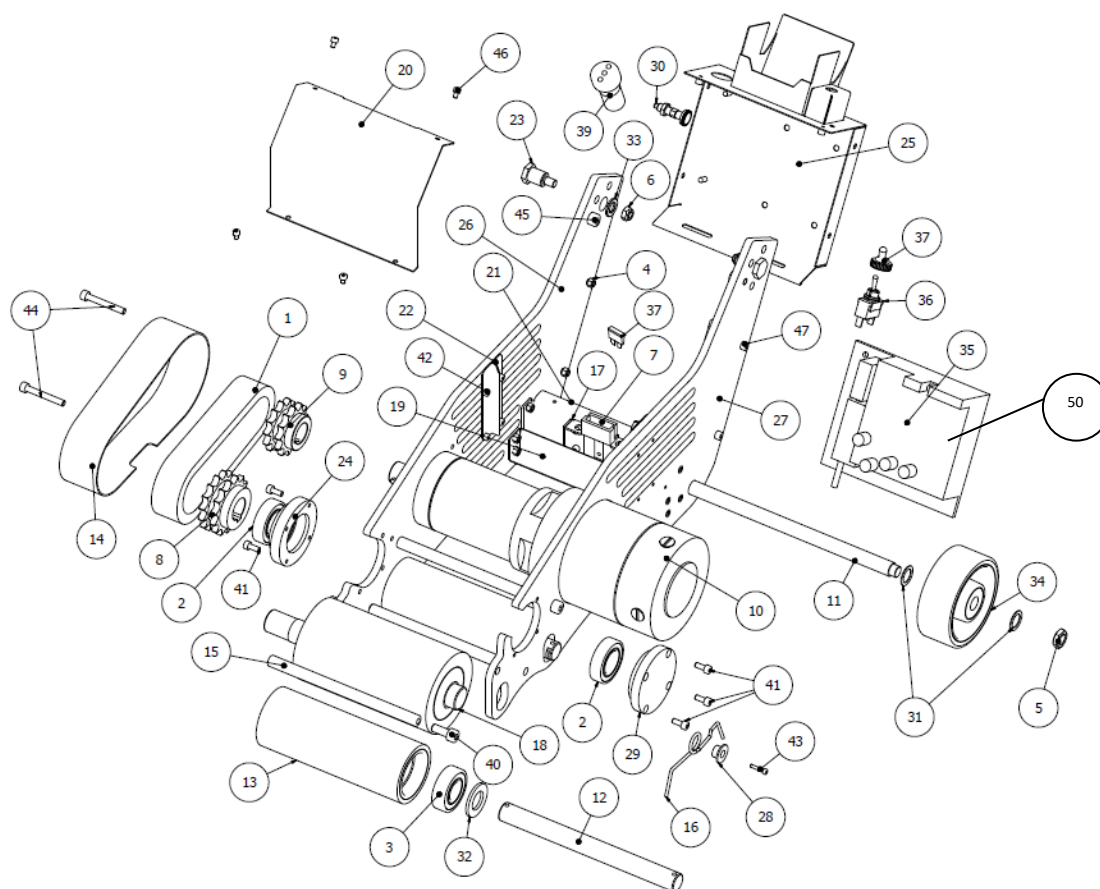
NUMBER OF FLASHES	DIAGNOSIS	SOLUTIONS/REMEDIES
1	Motor already powered at start (forward gear)	Turn off/on with throttle in zero position
2	Motor already powered at start (backward gear)	Turn off/on with throttle in zero position
3	Battery tension too low	Charge the battery
4	Battery tension too high	Use another battery and contact Renova
5	Throttle not at position zero at start	Turn off/on with throttle in zero position
6	Broken throttle (potentiometer)	Replace the throttle
7	Overheating	Cool the electronic board
8	Programming error eprom	Turn off/on. If the problem persists, contact Renova
9	Error on control's power	Turn off/on. If the problem persists, contact Renova

PLEASE NOTE:

Please see warranty conditions on the warranty sheet.

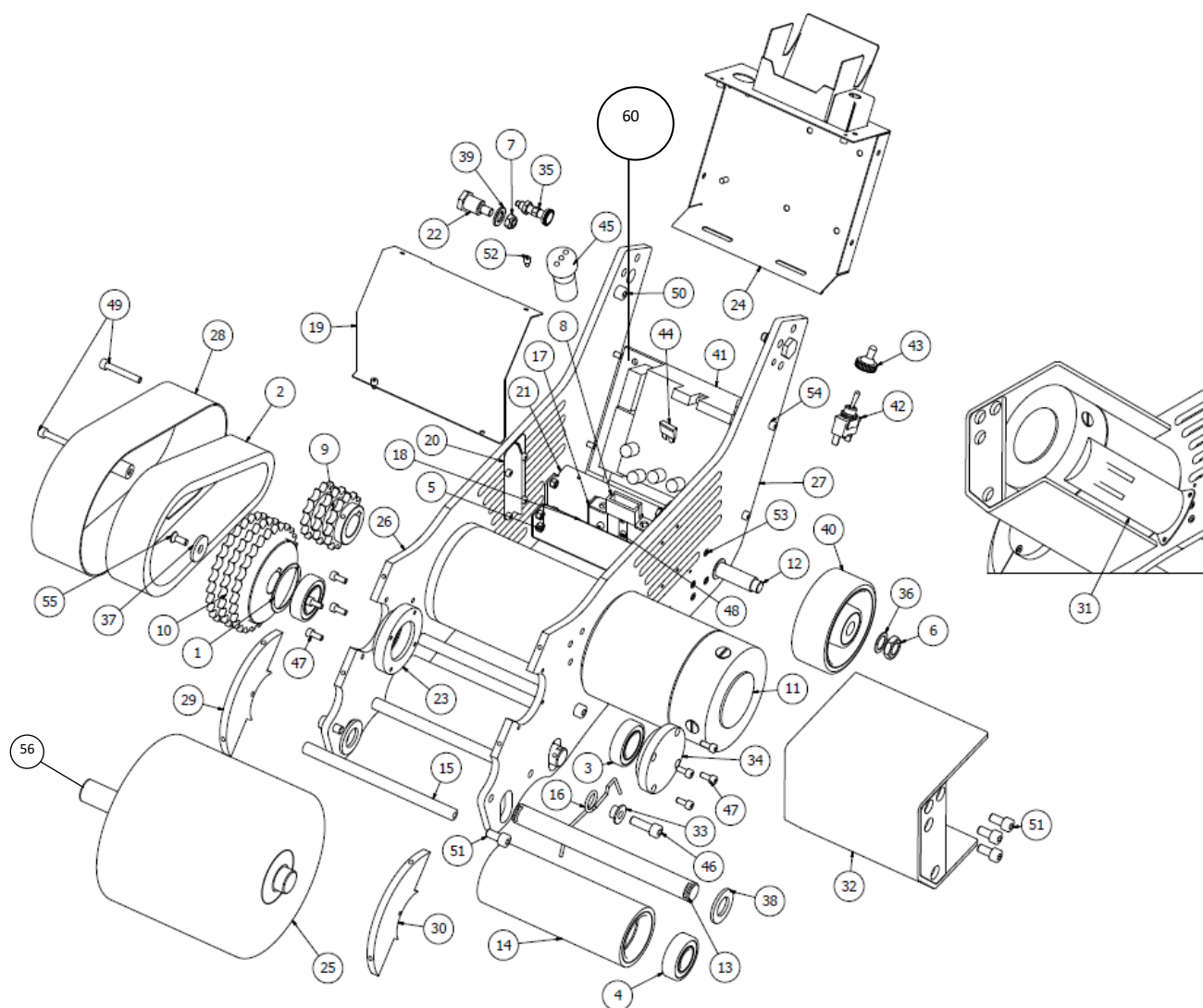
components descriptions and codes

MRE 100 L / MRE 200 L / MRE 300 L



POSITION	CODES – FOR MODELS MRE L			DESCRIPTION
	MRE 100 L	MRE 200 L	MRE 300 L	
1	C10-0012	C10-0012	C10-0012	Double chain
2	C30-0004	C30-0004	C30-0004	Ball bearing
3	C30-0008	C30-0008	C30-0008	Ball bearing
4	D10-0001	D10-0001	D10-0001	Nut
5	D14-0002	D14-0002	D14-0002	Nut
6	D16-0001	D16-0001	D16-0001	Nut
7	E50-0015	E50-0015	E50-0015	Bottom connector
8	I30-0001	I30-0001	I30-0001	Sprocket
9	I30-0023	I30-0023	I30-0023	Sprocket
10	M65-0021	M65-0022	M65-0023	Gear motor
11	MREP0016	MREP0016	MREP0016	Rear wheels axis
12	MREP0017	MREP0017	MREP0017	Rubber roller axis
13	MREP0018	MREP0018	MREP0018	Rubber roller
14	MREP0022	MREP0022	MREP0022	Chain gear box – roller drive cover
15	MREP0023	MREP0023	MREP0023	Rod
16	MREP0027	MREP0027	MREP0027	Spring
17	MREP0035	MREP0035	MREP0035	Fixed battery centering holder
18	MREP0043	MREP0043	MREP0043	Roller drive
19	MREP0061	MREP0061	MREP0061	Bottom battery holder
20	MREP0063	MREP0063	MREP0063	Electronic unit front cover
21	MREP0069	MREP0069	MREP0069	Fixed battery holder
22	MREP0070	MREP0070	MREP0070	Fixed battery centering guide
23	MREP0091	MREP0091	MREP0091	Tilting handle pivot
24	MREP0145	MREP0145	MREP0145	Open flange for roller drive
25	MREP0168	MREP0168	MREP0168	Electronic unit back cover
26	MREP0169	MREP0169	MREP0169	Right frame (gearbox side)
27	MREP0170	MREP0170	MREP0170	Left frame (motor side)
28	MVRP0020	MVRP0020	MVRP0020	Spring holder
29	MVRP0024	MVRP0024	MVRP0024	Closed flange roller drive
30	P52-0001	P52-0001	P52-0001	Spring stopper for tilting handle
31	R60-0001	R60-0001	R60-0001	Washer
32	R60-0005	R60-0005	R60-0005	Washer
33	R60-0007	R60-0007	R60-0007	Flat washer
34	R95-0001	R95-0001	R95-0001	Rubber wheel
35	S15-0067	S15-0067	S15-0067	Electronic unit
36	S15-0020	S15-0020	S15-0020	ON/OFF switch
37	S15-0021	S15-0021	S15-0021	Rubber cover for ON/OFF switch
38	S15-0023	S15-0023	S15-0023	Fuse
39	S20-0002	S20-0002	S20-0002	Battery status LEDs
40	V50-0005	V50-0005	V50-0005	Screw for rod
41	V50-0007	V50-0007	V50-0007	Screw for flange
42	V50-0008	V50-0008	V50-0008	Screw for fixed guide
43	V50-0011	V50-0011	V50-0011	Screw for spring holder
44	V50-0016	V50-0016	V50-0016	Screw for chain cover
45	V50-00022	V50-00022	V50-00022	Handle rotation limit screw
46	V50-0026	V50-0026	V50-0026	Screw for front cover
47	V50-0030	V50-0030	V50-0030	Screw for electronic unit holder
48	MREP0078	MREP0078	MREP0078	Motor wires cover
50	E50-0150	E50-0150	E50-0150	Remote led with white plug
50	E50-0160	E50-0160	E50-0160	Remote led with green plug

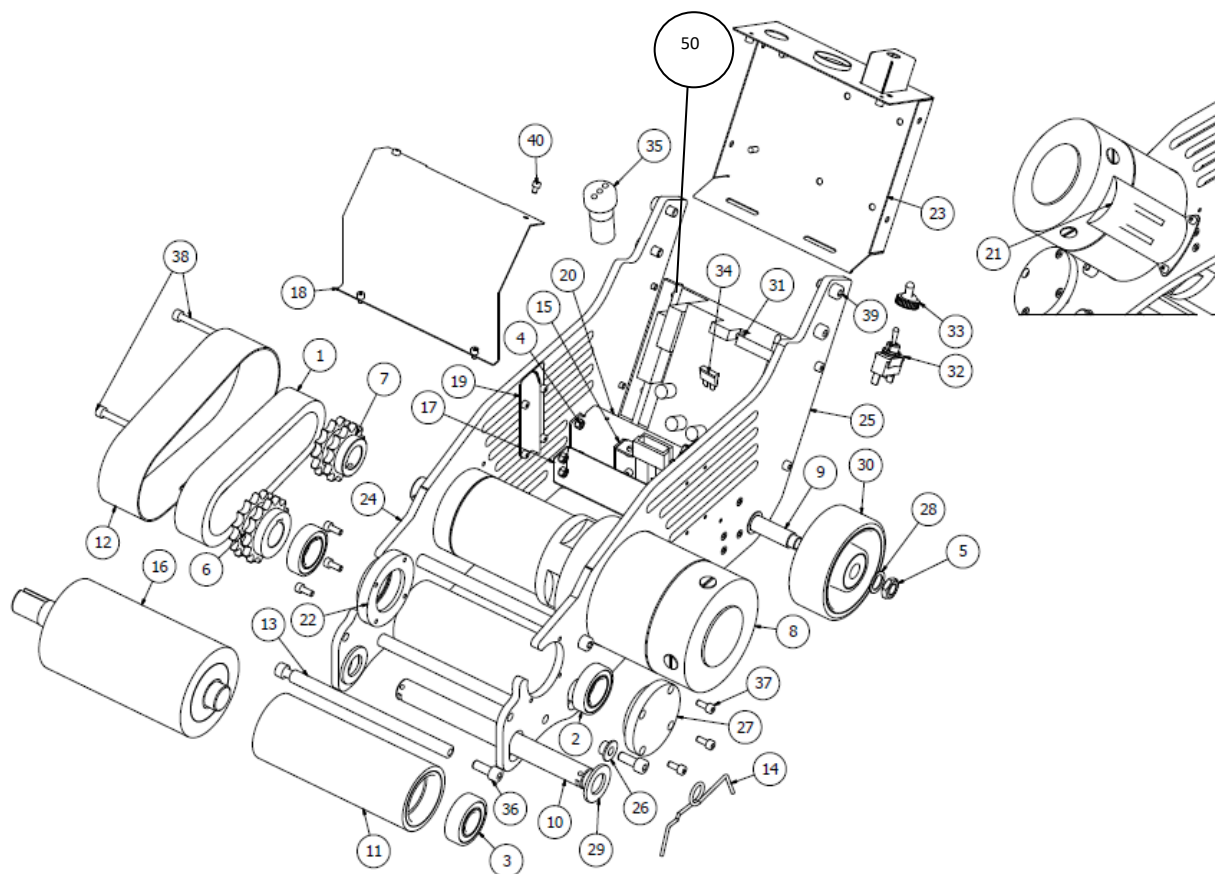
MRE 500 L



POSITION	CODES – FOR MODEL MRE 500 L	DESCRIPTION
1	A70-0024	Seeger
2	C10-0021	Triple chain
3	C30-0035	Bearing for flange
4	C30-0008	Ball bearing
5	D10-0001	Nut
6	D14-0001	Wheels nut
7	D16-0001	Nut
8	E50-0014	Connector
9	I30-0017	Triple sprocket
10	I30-0028	Triple sprocket
11	M65-0032	Gear motor
12	MREP0016	Rear wheels axis
13	MREP0098	Rubber roller axis
14	MREP0018	Rubber roller

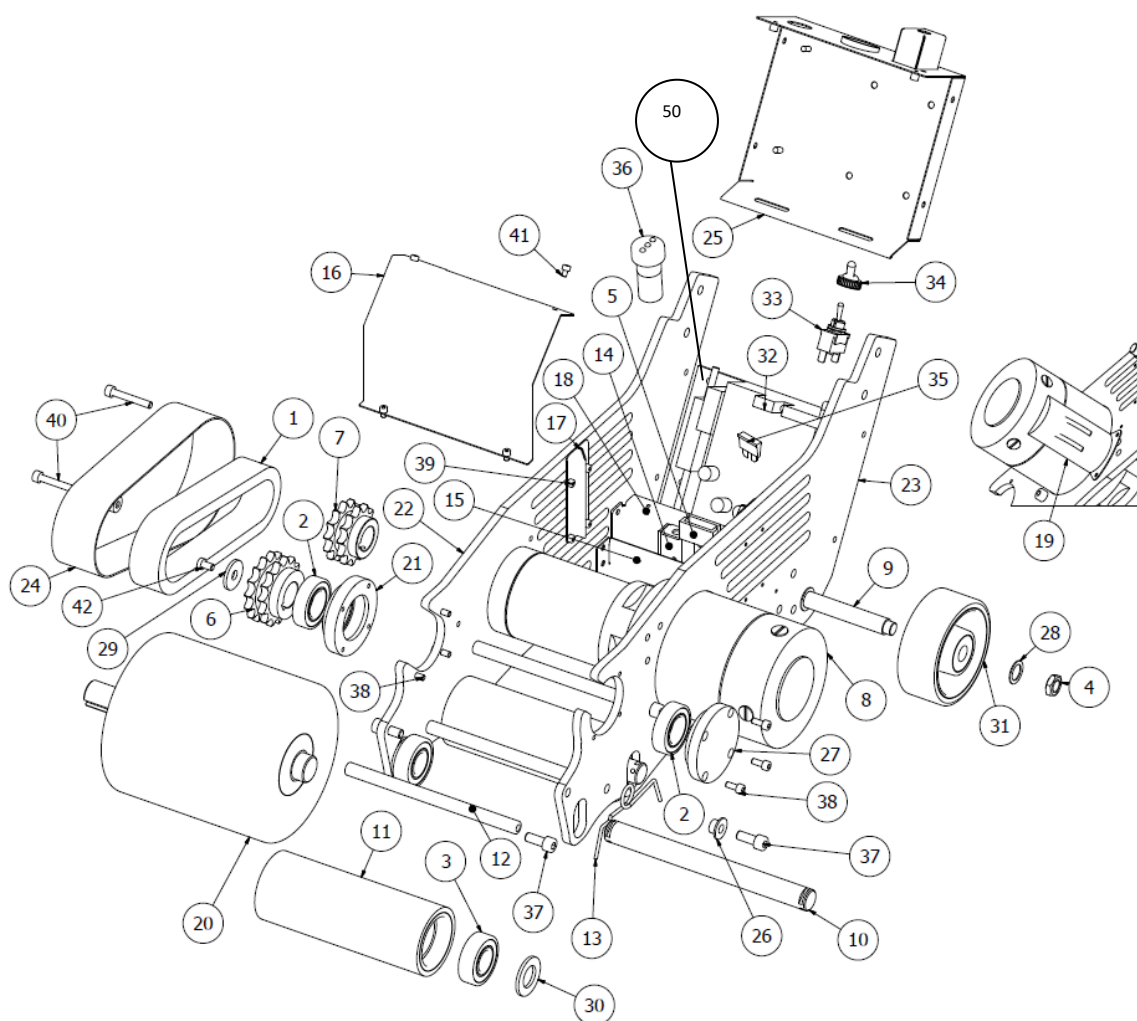
15	MREP0023	Rod
16	MREP0027	Spring
17	MREP0035	Fixed battery centering holder
18	MREP0061	Bottom battery holder
19	MREP0063	Electronic unit front cover
20	MREP0070	Fixed battery centering guide
21	MREP0077	Fixed battery holder
22	MREP0091	Tilting handle pivot
23	MREP0393	Open flange for roller drive
24	MREP0168	Electronic unit back cover
25	MREP0392	Roller drive
26	MREP0390	Right frame (gearbox side)
27	MREP0194	Left frame (motor side)
28	MREP0196	Cover for triple chain
29	MREP0394	Closing frame
30	MREP0199	Closing frame
31	MREP0201	Cover for motor wires
32	MREP0202	Motor cover
33	MVRP0020	Spring holder
34	MVRP0024	Closed flange roller drive
35	P52-0001	Spring stopper for tilting handle
36	R60-0001	Washer for wheels
37	MREP0396	Washer for sprocket blocking
38	R60-0005	Washer for rubber roller
39	R60-0007	Washer for tilting handle pivot
40	R95-0001	Rubber wheel
41	S15-0019	Electronic unit
42	S15-0020	ON/OFF switch
43	S15-0021	Rubber cover for ON/OFF switch
44	S15-0023	Fuse
45	S20-0002	Battery status LEDs
46	V50-0006	Screw for spring holder
47	V50-0007	Screw for flange
48	V50-0011	Screw for connector
49	V50-0016	Screw for chain cover
50	V50-0022	Handle rotation limit screw
51	V50-0025	Screw for rod
52	V50-0026	Screw for front cover
53	V50-0027	Screw for battery holder
54	V50-0030	Screw for electronic unit
55	V53-0001	Screw for sprocket blocking
56	L50-0002	Straight key 12x8 L=40
60	E50-0150	Remote led with white plug
60	E50-0160	Remote led with green plug

MRE 100 LP / MRE 200 LP / MRE 300 LP



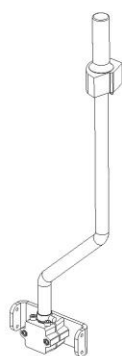
POSITION	CODES – FOR MODELS MRE LP			DESCRIPTION
	MRE100 LP	MRE200 LP	MRE300 LP	
1	C10-0012	C10-0012	C10-0012	Double chain
2	C30-0004	C30-0004	C30-0004	Bearing flange
3	C30-0008	C30-0008	C30-0008	Bearing for rubber roller
4	D10-0001	D10-0001	D10-0001	Nut
5	D14-0002	D14-0002	D14-0002	Wheels nut
6	I30-0001	I30-0001	I30-0001	Sprocket
7	I30-0023	I30-0023	I30-0023	Sprocket
8	M65-0014	M65-0015	M65-0016	Gear motor
9	MREP0016	MREP0016	MREP0016	Rear wheels axis
10	MREP0017	MREP0017	MREP0017	Rubber roller axis
11	MREP0018	MREP0018	MREP0018	Rubber roller
12	MREP0022	MREP0022	MREP0022	Chain gear box – roller drive cover
13	MREP0023	MREP0023	MREP0023	Rod
14	MREP0027	MREP0027	MREP0027	Spring
15	MREP0035	MREP0035	MREP0035	Fixed battery centering holder
16	MREP0043	MREP0043	MREP0043	Roller drive
17	MREP0061	MREP0061	MREP0061	Bottom battery holder
18	MREP0063	MREP0063	MREP0063	Electronic unit front cover

19	MREP0070	MREP0070	MREP0070	Fixed battery centering guide
20	MREP0077	MREP0077	MREP0077	Fixed battery holder
21	MREP0104	MREP0104	MREP0104	Cover for motor wires
22	MREP0145	MREP0145	MREP0145	Open flange for roller drive
23	MREP0187	MREP0187	MREP0187	Electronic unit holder for ON/OFF switch
24	MREP0206	MREP0206	MREP0206	Right frame (gearbox side)
25	MREP0207	MREP0207	MREP0207	Left frame (motor side)
26	MVRP0020	MVRP0020	MVRP0020	Spring holder
27	MVRP0024	MVRP0024	MVRP0024	Closed flange roller drive
28	R60-0001	R60-0001	R60-0001	Washer for wheels
29	R60-0005	R60-0005	R60-0005	Washer for rubber roller
30	R95-0001	R95-0001	R95-0001	Rubber wheels
31	S15-0069	S15-0069	S15-0069	Electronic unit
32	S15-0020	S15-0020	S15-0020	ON/OFF switch
33	S15-0021	S15-0021	S15-0021	Rubber cover for ON/OFF switch
34	S15-0023	S15-0023	S15-0023	Fuse
35	S20-0002	S20-0002	S20-0002	Battery status LEDs
36	V50-0005	V50-0005	V50-0005	Screw for rod
37	V50-0007	V50-0007	V50-0007	Screw for flange
38	V50-0016	V50-0016	V50-0016	Screw for chain cover
39	V50-0025	V50-0025	V50-0025	Screw for handle fixing
40	V50-0026	V50-0026	V50-0026	Screw for front cover
50	E50-0150	E50-0150	E50-0150	Remote led with white plug
50	E50-0160	E50-0160	E50-0160	Remote led with green plug

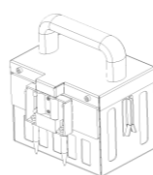


POSITION	CODES – FOR MODELS MRE LPT			DESCRIPTION
	MRE100 LPT	MRE200 LPT	MRE300 LPT	
1	C10-0020	C10-0020	C10-0020	Double chain
2	C30-0004	C30-0004	C30-0004	Bearing for flange
3	C30-0008	C30-0008	C30-0008	Bearing for rubber roller
4	D14-0002	D14-0002	D14-0002	Nut for wheels
5	E50-0001	E50-0001	E50-0001	Connector
6	I30-0001	I30-0001	I30-0001	Double sprocket
7	I30-0023	I30-0023	I30-0023	Double sprocket
8	M65-0014	M65-0015	M65-0016	Gear motor
9	MREP0016	MREP0016	MREP0016	Rear wheels axis
10	MREP0017	MREP0017	MREP0017	Roller axis
11	MREP0018	MREP0018	MREP0018	Rubber roller
12	MREP0023	MREP0023	MREP0023	Rod
13	MREP0027	MREP0027	MREP0027	Spring
14	MREP0035	MREP0035	MREP0035	Fixed battery centering holder
15	MREP0061	MREP0061	MREP0061	Bottom battery holder
16	MREP0063	MREP0063	MREP0063	Electronic unit front cover

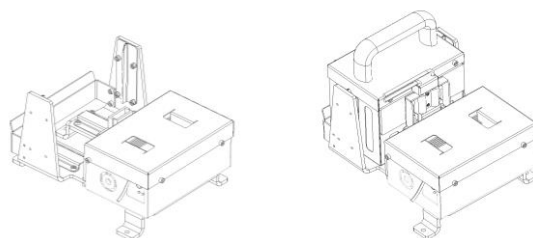
17	MREP0070	MREP0070	MREP0070	Fixed battery centering guide
18	MREP0077	MREP0077	MREP0077	Fixed battery holder
19	MREP0104	MREP0104	MREP0104	Cover for motor wires
20	MREP0108	MREP0108	MREP0108	Roller drive
21	MREP0145	MREP0145	MREP0145	Open flange for roller drive
22	MREP0180	MREP0180	MREP0180	Right frame (gearbox side)
23	MREP0181	MREP0181	MREP0181	Left frame (motor side)
24	MREP0184	MREP0184	MREP0184	Double chain carter
25	MREP0187	MREP0187	MREP0187	Electronic unit holder for ON/OFF switch
26	MVRP0020	MVRP0020	MVRP0020	Spring holder
27	MVRP0024	MVRP0024	MVRP0024	Closed flange roller drive
28	R60-0001	R60-0001	R60-0001	Washer for wheels
29	R60-0004	R60-0004	R60-0004	Washer for sprocket blocking
30	R60-0005	R60-0005	R60-0005	Washer for rubber roller
31	R95-0001	R95-0001	R95-0001	Rubber wheel
32	S15-0069	S15-0069	S15-0069	Electronic unit
33	S15-0020	S15-0020	S15-0020	ON/OFF switch
34	S15-0021	S15-0021	S15-0021	Rubber cover for ON/OFF switch
35	S15-0023	S15-0023	S15-0023	Fuse
36	S20-0002	S20-0002	S20-0002	Battery status LEDs
37	V50-0005	V50-0005	V50-0005	Screw for rod
38	V50-0007	V50-0007	V50-0007	Screw for flange
39	V50-0008	V50-0008	V50-0008	Screw for battery guide
40	V50-0016	V50-0016	V50-0016	Screw for chain cover
41	V50-0026	V50-0026	V50-0026	Screw for electronic unit cover
42	V53-0001	V53-0001	V53-0001	Screw for sprocket blocking
50	E50-0150	E50-0150	E50-0150	Remote led with white plug
50	E50-0160	E50-0160	E50-0160	Remote led with green plug



	MREK0029	handle
	MREK0016	handle



	KITBATT C	24 V battery for MRE L models
	KITBATT LP	24 V battery for MRE LP and MRE LPT models



The battery charger must not be positioned vertically but always on a horizontal surface.

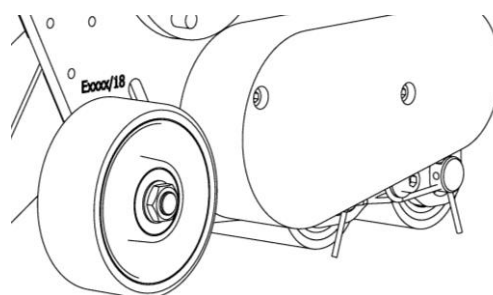
	KITCHRC	charger 220V 50-60 Hz
	KITCHRUSAC	charger US 110V 50-60 Hz

SPARE PARTS REQUEST

Please always communicate the serial number of your **moviroll** when requiring spare parts together with the code of the spare parts needed.

Each **moviroll** is provided with its serial number.
Please find the serial number of your **moviroll** stamped on the **moviroll** frame, above the rear wheel.
Example in the picture on the right.

Please find the serial number also on the warranty sheet provided with the **moviroll** and on the Declaration of Conformity in this manual.



instructions for a proper use

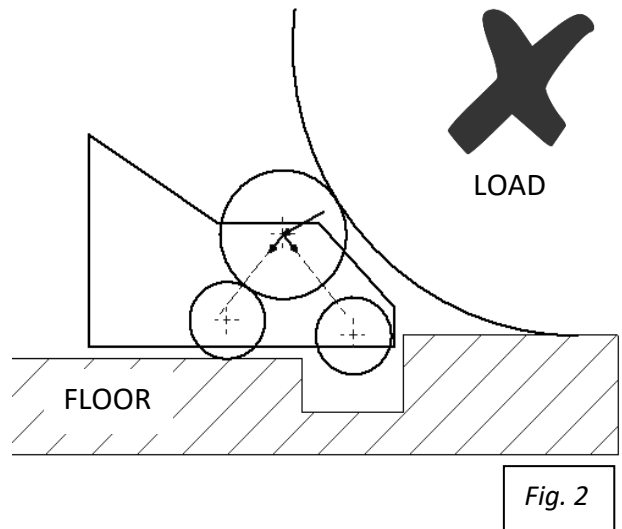
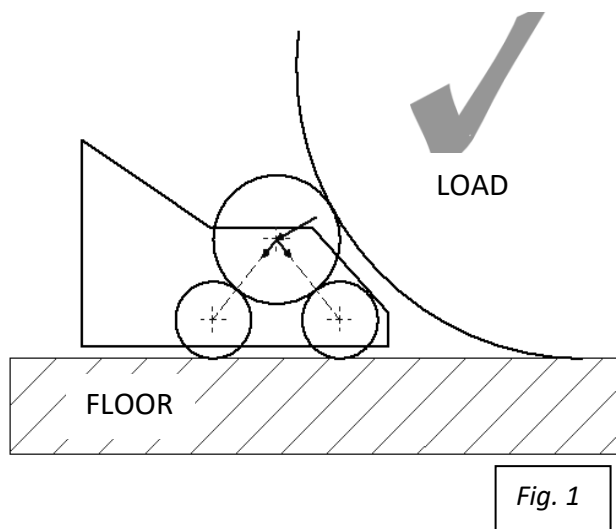
moviroll uses the power of a gear motor, which generates the capability of moving small or big loads through a pyramidal transmission with rollers.

The power transmission from the motor to the rollers begins when **moviroll** is touching the roll/load. The rollers on the ground allow the movement of the load in a continuous and regular way and the overcoming of small obstacles.

ⓘ Do not use **moviroll** on surfaces with obstacles and holes of big dimensions that may cause the detachment of one of the rollers from the roller drive.

Figure 1 shows how the weight of the roll/load should be unloaded on the rollers.

Figure 2 shows an example of how **moviroll** should not work in order to avoid the premature breakdown of the bearing of the roller drive due to an improper unloading of the roll/load weight on them.



ISOENCertifications S.r.l.



ISOENCertifications

ATTESTAZIONE DI CONFORMITÀ /CONFORMITY STATEMENT

dichiariamo che l'esame è stato effettuato secondo i sotto citati requisiti che il sottoscritto soggetto recepisce.
/we declare that the examination has been carried out according to the below mentioned requirements, that are acknowledged by the holder of the present Statement.

Secondo quanto descritto nel Fascicolo Tecnico costituito nell'anno 2015

/According to the content of the Technical File issued in 2015

RENOVA S.r.l.

Viale Rimembranze, 93

I - 20099 - Sesto San Giovanni (MI)

dichiara che il/i prodotto/i

/declares that the product(s)

Descrizione ; Description:
Nome /Name:

Modello ; Model:

**Spingi bobina
MOVIROLL**

**MRE
MRE L
MRE LP
MRE LPT
MRE XS
MRE XS L
MRE XS LPT**



È CONFORME alle seguenti direttive:

/Fulfills the requirements of the following directive(s):

alla Direttiva 2006/42/CE relativa alle macchine (procedura di valutazione in accordo all'allegato VIII)

/Directive 2006/42/EC "Machinery directive" for conformity assessment according to annex VIII

Norme applicate

/Applied standards

EN ISO 12100:2010



ISOENCertifications

ISOENCertifications s.r.l.

Sede Legale: via Suardi, 24 - 24124 BERGAMO

Sede Operativa: via Placinti, 1 - 24040 Macione (BG)

tel. 035 1 997720 fax. 035 4943471

P.IVA & C.F. 03940380169

e-mail: info@isoe,certifications.it

website: www.isoencertifications.it

L'Amministratore Unico

ISOENCertifications S.r.l.

Niki Muller

/Signature of Niki Muller

prima emissione /first issue: 12/06/2015

data di revisione /revision date: Rev. A 12/06/2015

DICHIARAZIONE DI CONFORMITÀ

alla Direttiva 2006/42/CE relativa alle macchine in accordo all'allegato IIA

DECLARATION OF CONFORMITY

according to 2006/42/EC machinery directive annex IIA

RENOVA s.r.l.

a socio unico

Viale rimembranze 93, Sesto S. Giovanni (MI) 20099 Italy

info@renova-srl.com

DICHIARA CHE / DECLARE THAT

il prodotto/
the product

Descrizione / ~~description~~

Spingi bobina

Nome / Name

MOVIROLL

Modello / Model

MRE L / MRE LP / MRE LPT

Anno di fabbricazione e ultimo agg.
fascicolo tecnico/ ~~Production year and~~
~~technical file last revision~~

2023

N° matricola

E' CONFORME / FULFILLS

alle seguenti Direttive Europee:

/ the requirements of the Directive:

alla Direttiva 2006/42/CE relativa alle macchine
(procedura di valutazione in accordo all'allegato VIII)
directive 2006/42/EC "Machinery directive"
(conformity assessment according to annex VIII)

~~Norme applicate/applied standards~~

EN ISO 12100:2010

Nome e indirizzo della persona stabilita nella Comunità europea autorizzata a costituire il fascicolo tecnico /
Name and address of the person established in the EU Community authorized to compile the technical file

Ugo Re

Amministratore /
General manager



Nome / name

Funzione / ~~function~~

Firma / signature

Firma della persona autorizzata a redigere la dichiarazione a nome del fabbricante o del suo mandatario
Signature of the person empowered to draw up the declaration on behalf of the manufacturer or his authorized representative

Ugo Re

Amministratore /
General manager



Nome / name

Funzione / ~~function~~

Firma / signature

La macchina è progettata rispettando tutti i requisiti di sicurezza previsti per la destinazione d'uso che devono essere previsti anche agli elementi o quasi macchine associate per estenderne la destinazione d'uso con particolare riferimento a rischi interferenziali (posizionamento operatore, solidità di elementi mobile, giunzioni e saldature)

The machine is designed in compliance with all the safety requirements envisaged for the intended use which must also be provided for the associated elements or other Partly Completed Machinery to extend their intended use with particular reference to interference risks (operator positioning, solidity of moving elements and joints and welds)

Si declina ogni responsabilità legata all'eventuale non-conformità degli elementi associati o quasi macchine per estenderne la destinazione d'uso
We decline all responsibility related to any non-conformity of the associated elements or Partly Completed Machinery to extend their intended use

This declaration of conformity is issued under the sole responsibility of the manufacturer



	<p align="center">DICHIARAZIONE DI CONFORMITÀ UE EU DECLARATION OF CONFORMITY</p> <p>In accordo alla direttiva 2014/34/UE del Parlamento europeo e del Consiglio, del 26 febbraio 2014, concernente l'armonizzazione delle legislazioni degli Stati membri relative agli apparecchi e sistemi di protezione destinati a essere utilizzati in atmosfera potenzialmente</p> <p><i>According to 2014/34/EU directive on the harmonisation of the laws of the Member States relating to equipment and protective systems intended for use in potentially explosive atmospheres</i></p>
---	---

Ragione sociale / manufacturer	<p align="center">RENOVA SRL a socio unico Sede legale/legal site: Via Palmanova 24 20132 Milano Sede operativa/operative site: Viale Rimembranze 93 20099 Sesto San <u>Giovanni</u>(MI)-Italy</p>
---	---

dichiara che / declare that



Prodotto/Product Name	Spingi bobine ed attrezzature e per la movimentazione di carrelli Reel pushers and equipment and for cart handling
Tipologie/Types	<u>Movicart</u> <u>Moviroll</u>
Categoria ATEX ATEX category	3
Matricola/serial number	

E' CONFORME
FULFILLS

alla Direttiva Europea 2014/34/UE
the European Directive 2014/34/EU

Prodotto di categoria 3 per zone ATEX 2-22/ ATEX category 3 *product for 1-22 ATEX classified zone*



Sono stati applicati i seguenti standard tecnici
The following technical standards have been applied:

EN 1127-1:2019
EN ISO 80079-36:2016 (ex EN 13463 – 1)
EN ISO 80079-37:2016 (ex EN 13463 – 5)
Controllo interno della fabbricazione in accordo alla EN ISO/IEC 80079-34:2020
*Interna Fabrication Control according to **EN ISO/IEC 80079-34:2020***

RENOVA applicando il marchio CE garantisce che il progetto, la costruzione delle attrezzature sopra menzionate rispondono ai requisiti della Direttiva 2014/34/UE
La presente dichiarazione di conformità è rilasciata sotto la responsabilità esclusiva del fabbricante.

RENOVA *by using the CE marking guarantee that design, construction of equipment mentioned above fulfil the requirements of the Directive 2014/34/EU*
This declaration of conformity is issued under the sole responsibility of the manufacturer.



Renova srl – viale Rimembranze 93 – 20099 Sesto San Giovanni - Italy – tel: +39.02.2700.7394 – fax: +39.02.2570.8635
www.renova-srl.com – email: support@renova-srl.com